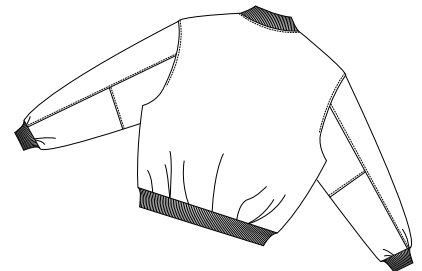


# Wool and Leather Letterman Jacket

PORT AUTHORITY®



Front



Back

## J783

- \* 24-ounce Melton wool body \* 100% genuine leather sleeves
- \* Diamond quilted nylon lining on body and sleeves \* Knit collar/cuffs/bottom hem
- \* Snap front closure \* Locker loop \* Slash pockets with leather trim \* Inside chest pocket

### Care Instructions:

Dry clean by leather specialist.

### Finished Measurements in Inches

Size	XS	S	M	L	XL	2XL	3XL	4XL
Length	25	25.5	26	26.5	28	28.5	29.5	30
Chest	22.5	23.5	25	26.5	28	29.5	31	32.5
Sleeve	33	34.5	36.5	37.5	38.5	39	39.5	40
Collar Height	2	2	2	2	2	2	2	3
Areas for Decoration	Left Chest		Port Pocket™			Yolk Seam, Left Zipper Flap		

Collar measured from center back neck seam to top hem. Chest width measured 1" below arm hole.  
Body length measured from center back neck seam to hem. Sleeve length measured from center back seam to hem.

### Colors

Black/Black

### Please Note:

Colors shown are approximate and for reference only. For closest match see PMS colors, or for exact match, returnable samples and grommeted samples are available.

### Color Chart

Jacket Colors	Black
Textile PMS	19-4006TC
General PMS	Process Black